



101 Tosca Drive
Stoughton, MA 02072 USA

(Phone) 781.297-2034
(FAX) 781.297-2039
(Web) www.csmisolutions.com

SportsWare2008 Palm Installation Instructions

Note: Please read the following document before installing SportsWare2008 on your Palm Device.

1. Overview

Welcome to the SportsWare2008 for Palm software. This document details the procedures to install and synchronize the SportsWare2008 for Palm version.

Note: This procedure assumes you have already installed SportsWare2008 on your Desktop Computer.

2. Supported Devices

- OS: PalmOS 3.5 and above Memory: 16MB recommended.

3. Licensing the Palm Program

1. Start SportsWare on the PC by clicking on the **SportsWare** icon.
2. From **File** menu, select **Add License, PDA**.
3. Select the **PDA names** you want to license.
4. Click the **Generate** button and contact CSMi with the code to obtain your Palm license.

4. Deleting Existing SportsWare Files from the Palm

You must delete all SportsWare files from your Palm before installing a new SportsWare version. To delete a file:

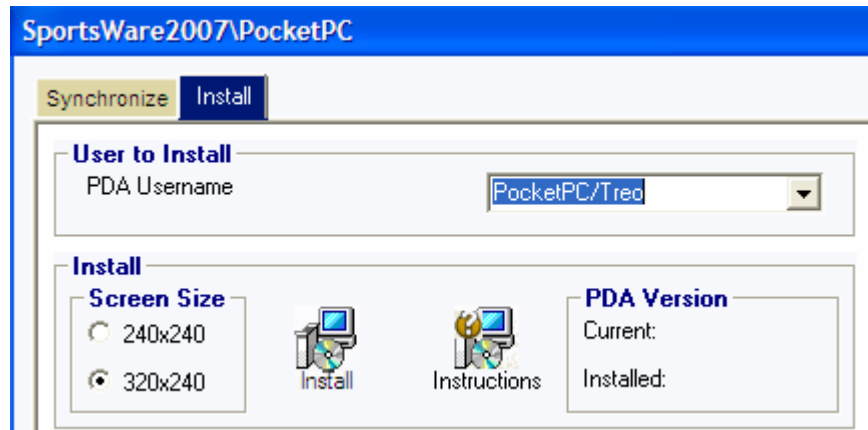
1. Click on the **Home** icon.
2. Click on the **Time** display.
3. From the **App** menu, click **Delete**.
4. Select the desired file and click the **Delete** button.
5. Repeat step 4 for each file you want to delete.

Delete the following 12 files from the Palm. **Note:** Insure that these files have been deleted. Failure to do so could result in data corruption.

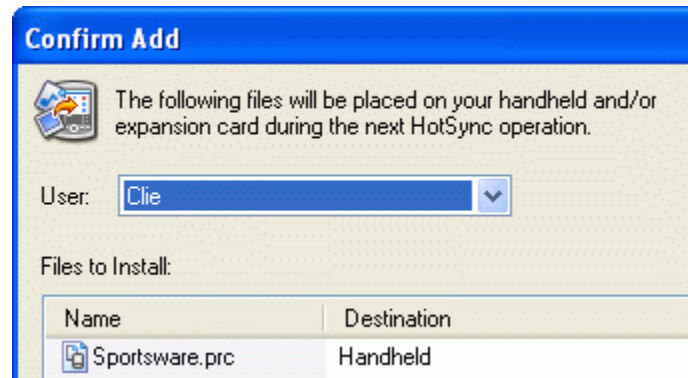
- | | |
|--------------|------------------|
| • Athlete | • Athlete_HDF |
| • Injury | • Injury_HDF |
| • Phone | • Phone_HDF |
| • Referral | • Referral_HDF |
| • Treatment | • Treatment_HDF |
| • Concussion | • Concussion_HDF |
| • SportsWare | |
| • System | |

5. Installing the New SportsWare Program on the Palm

1. From the PC, start **SportsWare2008**.
2. From the **File** menu, select **Synchronize, PDA**.
3. Select the **Install** tab.
4. Select the **PDA Username**.
5. Select the correct screen resolution of your PDA device. If you do not know the screen resolution of your PDA, refer to your PDA owner's manual.
6. Click the **Install** button.



7. SportsWare launches the Palm Installer. Select the correct **User** and click the **OK** button.



8. Perform a **HotSync** to copy the SportsWare program to the Palm.
9. On the Palm, click the **SportsWare2008** icon. The SportsWare Palm application will start and complete the installation.
10. After the SportsWare application starts, exit SportsWare. **NOTE: Synchronization will not work if the SportsWare program is open; the PDA will view the databases as busy and will not transfer the data.**

6. Sending Your Data to the Palm for the First Time

1. Start SportsWare on the PC.
2. From the **File** menu, select **Synchronize, PDA**.
3. Check the **Overwrite data on PDA** and the **Update Picklists on PDA** checkboxes.

NOTE: These boxes should only be selected the first time you send data to the new SportsWare application.

4. Select the **PDA Username**.
5. Click the **Synchronize** button. **NOTE:** If you see a box popup asking for a *HandBase license key*, enter the value provided by CSMi.
6. SportsWare displays a message that you will over-write your existing Palm data. Click the **OK** button to continue.
7. After the data is exported, the "Perform a **HotSync**" window will appear. Do not click the **OK** button yet.
8. Perform the **HotSync**. After the *HotSync* is completed, click the **OK** button.

7. Synchronizing SportsWare Data with the Palm

After installing SportsWare on your Palm, you will periodically synchronize the data. During the synchronize procedure, SportsWare takes the new information from your Palm and adds it to the Desktop database. SportsWare then generates a new copy of the desktop data for the Palm and sends it to the Palm.

1. Start SportsWare on the PC.
2. From the **File** menu, select **Synchronize, PDA**.
3. Select the **PDA Username**.
4. Click the **Synchronize** button.
5. A perform HotSync window appears. Start the **HotSync**. During this first HotSync, SportsWare reads the data from your Palm. After the *HotSync* is completed, click the **OK** button.
6. SportsWare then combines the data from the Palm with the Desktop data and generates a new database for the Palm. When the new Palm database is ready, SportsWare asks you to perform a second HotSync.
7. Press the button on the Palm cradle to perform the second **HotSync**. After the HotSync is completed, click the **OK** button.
8. The synchronization between the Desktop and Palm is now complete. If you have a second Palm, you can synchronize it now by selecting the second Palm Username and repeating the above steps, otherwise click the **Exit** button to close the Synchronization window.