



101 Tosca Drive  
Stoughton, MA 02072 USA

(Phone) 781.297-2034  
(FAX) 781.297-2039  
(Web) [www.csmisolutions.com](http://www.csmisolutions.com)

## **SportsWare2008 PocketPC Installation Instructions**

**NOTE:** Please read the following document before installing SportsWare2008 on your PocketPC device

### **1. Overview**

- 1.1. Welcome to the SportsWare2008 for PocketPC software. This document details the procedures to install and synchronize the SportsWare2008 for PocketPC version.
- 1.2. **Note:** This procedure assumes you have already installed SportsWare2008 on your Desktop Computer.

### **2. Supported Devices**

- 2.1. Pocket PC, Pocket PC2002, Pocket PC2004, Windows Mobile 5 and Windows Mobile 6 devices with ARM/XScale Processor. (To determine your processor type, go to the Start menu, tap Settings, go to the System tab, and then tap About).
- 2.2. A device with 32MB or 64MB of RAM is recommended. 2 MB free memory (4MB recommended).

### **3. Installing ActiveSync – Windows98 thru XP**

- 3.1. ActiveSync® is the Microsoft application used to transfer data between your desktop and your PocketPC. It is on the CD that came with your PocketPC. Before you can connect to the PocketPC, you must install ActiveSync. This procedure need only be done once when first setting up your PPC.
- 3.2. Install ActiveSync using the CD and instructions that came with your PocketPC. You can also download ActiveSync from [www.microsoft.com](http://www.microsoft.com).
- 3.3. Place your device in the cradle. ActiveSync should recognize the device and proceed to establish a PARTNERSHIP. Follow the instructions to set up a partnership.  
**IMPORTANT: REMEMBER your partnership name. When you install SportsWare and when you sync the desktop and PocketPC you will need to reference this name.**
- 3.4. Configure ActiveSync by selecting **Tools, Options**.
- 3.5. Select the **Sync Options** tab.
- 3.6. Select the **Synchronize mobile device clock upon connecting** checkbox. This insures that the clocks on your desktop and the PocketPC will be synchronized.
- 3.7. Select the **Files** checkbox. See Figure 1.

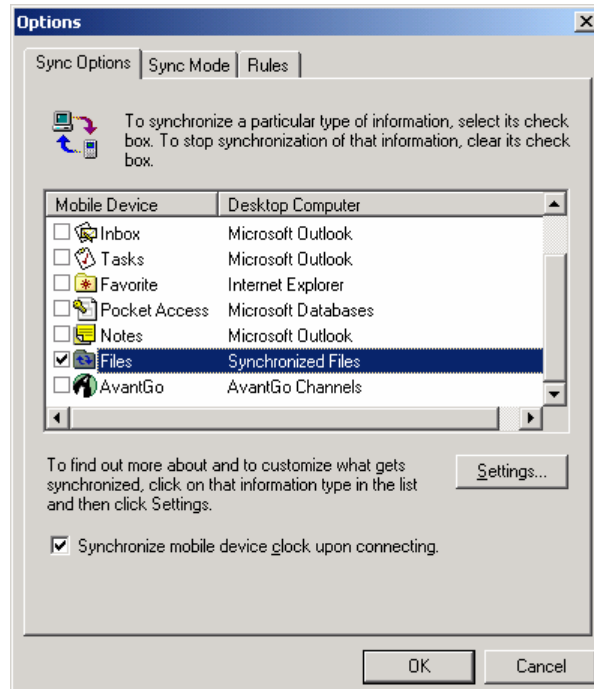


Figure 1 - Options

- 3.8. This will create the folder that will contain the desktop files that ActiveSync will transfer back and forth between the desktop and PocketPC. Click the **OK** button.
- 3.9. If the **Files** checkbox was not previously checked, you will see the message shown in Figure 2.

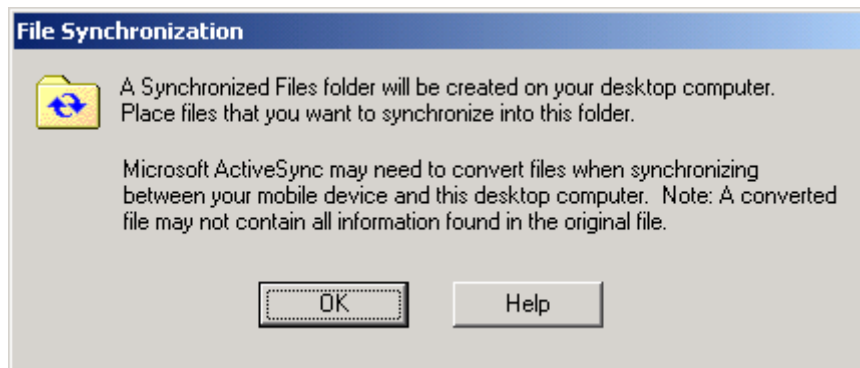


Figure 2 - File Synchronization

- 3.10. **NOTE:** Active Sync has three sync modes to choose from. From the PC select **Tools, Option, SyncMode**. Select a Sync mode, **Continuous, On Connection, or Manual**. Determine which mode you are using and understand it's implications for synchronization. If you have selected **Continuous** mode, you will not have to press the ActiveSync Sync button to synchronize, but you will have to watch the ActiveSync icon to determine when synchronization has been completed. When the green arrows have come to a **COMPLETE** stop (they sometimes stop for a few seconds and start up again) or when you click on ActiveSync and it says **SYNCHRONIZED**.

#### 4. Installing Windows Mobile Device Center – Windows Vista.

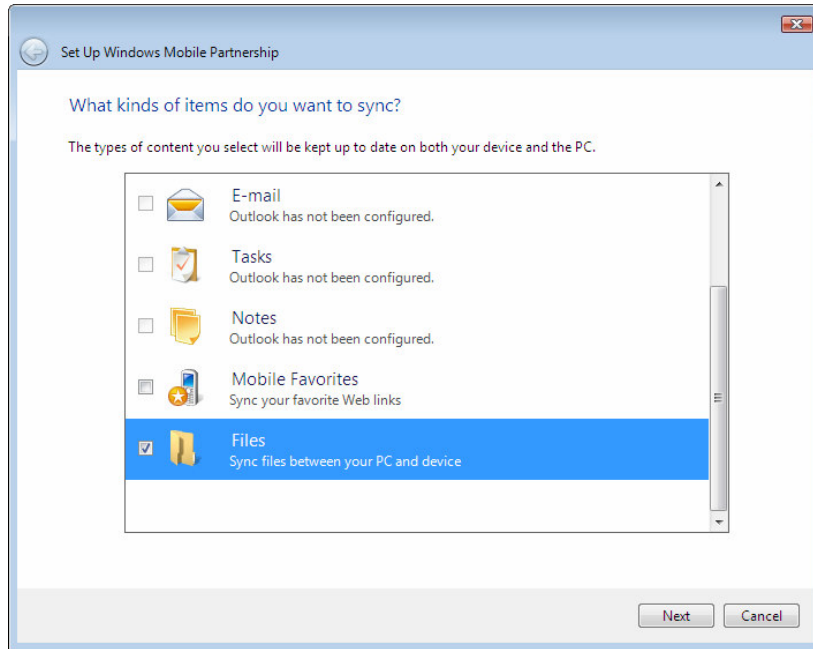
- 4.1. The Windows Mobile Device Center is Microsoft Vista application used to transfer data between your desktop and your PocketPC. You must install Mobile Device Center. This procedure need only be done once when first setting up your PPC.
- 4.2. Install Windows Mobile Device Center using the CD and instructions that came with your PocketPC. You can also download ActiveSync from [www.microsoft.com](http://www.microsoft.com).
- 4.3. Double click the Mobile Device Center shortcut on the desktop.



- 4.4. The Mobile Device Center will open up. Place your device in the cradle. Windows Mobile should recognize the device and proceed to automatically connect to your device. Once finished a green check mark with signify the connection is complete.



- 4.5. Click set up your device. At this point Windows Mobile will proceed to establish a PARTNERSHIP. Check the files box before clicking next. Follow the instructions to set up a partnership. **IMPORTANT: REMEMBER** your partnership name. When you install SportsWare and when you sync the desktop and PocketPC you will need to reference this name.



- 4.6. This will create the folder that will contain the desktop files that ActiveSync will transfer back and forth between the desktop and PocketPC.

## 5. Licensing the PocketPC Program

- 5.1. Start SportsWare on the PC by clicking on the **SportsWare** icon.
- 5.2. From **File** menu, select **Add License, PDA**.
- 5.3. Select the **PDA names** you want to license.
- 5.4. Click the **Generate** button and fax or e-mail CSMi with the code to obtain your PDA license.

## 6. Deleting Existing SportsWare Files from the PocketPC

- 6.1. **IMPORTANT:** You must delete all SportsWare files from your PocketPC before installing a new SportsWare version.
- 6.2. On the PocketPC select **Start, Settings**.
- 6.3. Select the **System** tab.
- 6.4. Select **Remove Programs**.
- 6.5. Select **CSMi SportsWare** and click the **Remove** button.
- 6.6. Select **Start, Programs**.
- 6.7. Select the **File Explorer**.
- 6.8. From the Pull Down list at the top-left-corner of the File Explorer, select **My Documents**.

- 6.9. Select and hold the **HandBase3** folder.
- 6.10. From the Pop-up menu, select **Delete**.
- 6.11. Select and hold the **CSMi SportsWare2008.CAB** file.
- 6.12. From the Pop-up menu, select **Delete**.

**7. Installing SportsWare on the PocketPC**

- 7.1. From the PC, start **SportsWare2008**.
- 7.2. From the **File** menu, select **Synchronize, PDA**.
- 7.3. Select the **Install** tab.
- 7.4. Select the **PDA Username**.
- 7.5. Select the correct screen resolution of your PDA device. If you do not know the screen resolution of your PDA, refer to your PDA owner's manual.
- 7.6. Click the **Install** button. SportsWare will copy the installation program (CSMi SportsWare 2008.CAB) to the PocketPC synchronized folder.

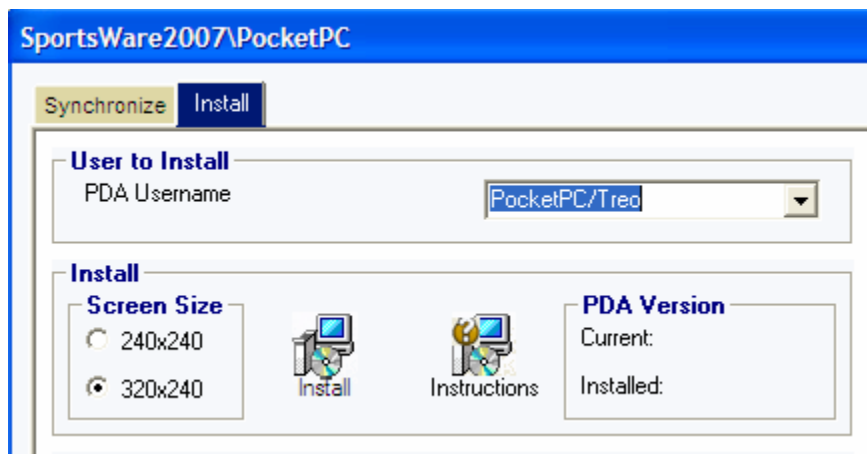



Figure 3 - Install Tab

- 7.7. From the Windows desktop, double-click the **ActiveSync** icon. ActiveSync should report all files are synchronized. For Vista users click the small green button  on The Windows Mobile Device Center screen.


Information Type	Status
 Files	Synchronized

Figure 4 - Synchronization Status

- 7.8. On the PocketPC select **Start, Programs**.
- 7.9. Select the **File Explorer**.
- 7.10. Open the **My Documents** folder.

- 7.11. Click the **CSMi SportsWare 2008** file. This will install the SportsWare application files.
- 7.12. Select **Start, Programs**.
- 7.13. Click the **SportsWare2008** icon 🍊. The SportsWare PocketPC application will start and complete the installation.
- 7.14. From SportsWare, select **File, Exit** to close the program. **IMPORTANT:** *Failure to close the program on the PocketPC will result in SportsWare not syncing correctly.*

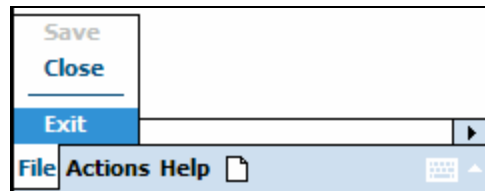


Figure 5 - File – Exit

## 8. Sending Your Data to the PocketPC for the First Time

- 8.1. After installing SportsWare on the PocketPC you must over-write the PPC data.
- 8.2. Start SportsWare on the PC.
- 8.3. From the **File** menu, select **Synchronize, PDA**.
- 8.4. Select the **PDA Username**.
- 8.5. Check the **Overwrite data on PDA** and the **Update Picklists on PDA** checkboxes. **NOTE:** *These boxes should only be selected the first time you send data to the new SportsWare application.*
- 8.6. A **Synchronize** window appears. Perform a Sync through ActiveSync. **IMPORTANT:** *Do not click OK until AFTER you have completed the Sync.* Depending on the SyncMode you selected when you installed ActiveSync the sync behavior will vary slightly, but in each case, clicking the **Sync** button on the ActiveSync panel (if it is disabled, a sync is in progress and you will have to wait) until you see a status of synchronized; insures a complete synchronization.
- 8.7. SportsWare displays a message that you will over-write your existing data. Click **OK** to continue.
- 8.8. SportsWare then combines the data from the PocketPC with the Desktop data and generates a new database for the PocketPC. When the new Palm database is ready, SportsWare asks you to perform a second Sync.

## 9. Synchronizing SportsWare Data with the PocketPC

- 9.1. After installing SportsWare on your PocketPC, you will periodically synchronize the data. During the synchronize procedure, SportsWare takes the new information from your PocketPC and adds it to the Desktop database. SportsWare then generates a new copy of the desktop data for the PocketPC and sends it to the PocketPC.

- 9.2. If SportsWare is running on the PocketPC, select, **File, Exit**. **IMPORTANT:** *If you do not exit SportsWare on the PocketPC before synchronizing, the data may be lost!*
- 9.3. From the **File** menu, select **Synchronize, PDA**.
- 9.4. Select the **PDA Username**.
- 9.5. Click the **Synchronize** button.
- 9.6. A Synchronize window appears. Depending on the SyncMode you selected when you installed ActiveSync the sync behavior will vary slightly, but in each case, clicking the **Sync** button on the ActiveSync panel (if it is disabled, a sync is in progress and you will have to wait) until you see a status of synchronized; insures a complete synchronization.
- 9.7. SportsWare then combines the data from the PocketPC with the Desktop data and generates a new database for the PocketPC. When the new PDA database is ready, SportsWare asks you to perform a second Sync.
- 9.8. A **Synchronize** window appears. Repeat the synchronization as in step 5.
- 9.9. The synchronization between the Desktop and PocketPC is now complete. If you have a second PocketPC, you can synchronize it now by selecting the second **PDA Username** and repeating the above steps, otherwise click the **Exit** button to close the Synchronization window.