



101 Tosca Drive
Stoughton, MA 02072 USA

(Phone) 781.297-2034
(FAX) 781.297-2039
(Web) www.csmisolutions.com

SportsWare2009 PocketPC Installation Instructions

Note: Please read the following document before installing SportsWare2009 on your PocketPC device

1. Overview

- 1.1. Welcome to the SportsWare2009 for PocketPC software. This document details the procedures to install and synchronize the SportsWare2009 for PocketPC version.
- 1.2. **Note:** This procedure assumes you have already installed SportsWare2009 on your Desktop Computer.

2. Supported Devices

- 2.1. Pocket PC, Pocket PC2002, Pocket PC2004, and Windows Mobile 5 devices with ARM/XScale Processor. (To determine your processor type, go to the **Start** menu, tap **Settings**, go to the **System** tab, and then tap **About**).
- 2.2. A device with 32MB or 64MB of RAM is recommended. 2 MB free memory (4MB recommended).

3. Installing ActiveSync – Windows98 thru XP

- 3.1. ActiveSync® is the Microsoft application used to transfer data between your desktop and your PocketPC. It is on the CD that came with your PocketPC. Before you can connect to the PocketPC, you must install ActiveSync. This procedure need only be done once when first setting up your PPC.
- 3.2. Install ActiveSync using the CD and instructions that came with your PocketPC. You can also download ActiveSync from www.microsoft.com.
- 3.3. Place your device in the cradle. ActiveSync should recognize the device and proceed to establish a PARTNERSHIP. Follow the instructions to set up a partnership.
Important: REMEMBER your partnership name. When you install SportsWare and when you sync the desktop and PocketPC you will need to reference this name.
- 3.4. Configure ActiveSync by selecting **Tools, Options**.
- 3.5. Select the **Sync Options** tab.
- 3.6. Select the **Synchronize mobile device clock upon connecting** checkbox. This insures that the clocks on your desktop and the PocketPC will be synchronized.
- 3.7. Select the **Files** checkbox. See Figure 1.

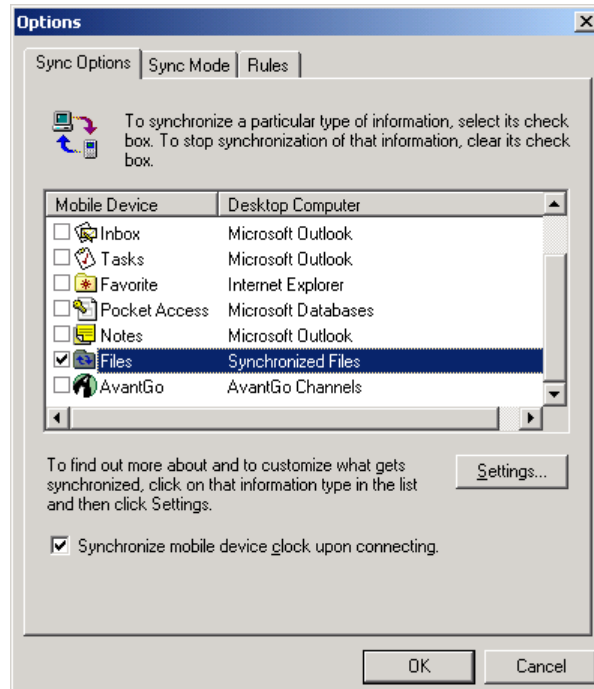


Figure 1 - Options

- 3.8. This will create the folder that will contain the desktop files that ActiveSync will transfer back and forth between the desktop and PocketPC. Click the **OK** button.
- 3.9. If the **Files** checkbox was not previously checked, you will see the message shown in Figure 2.

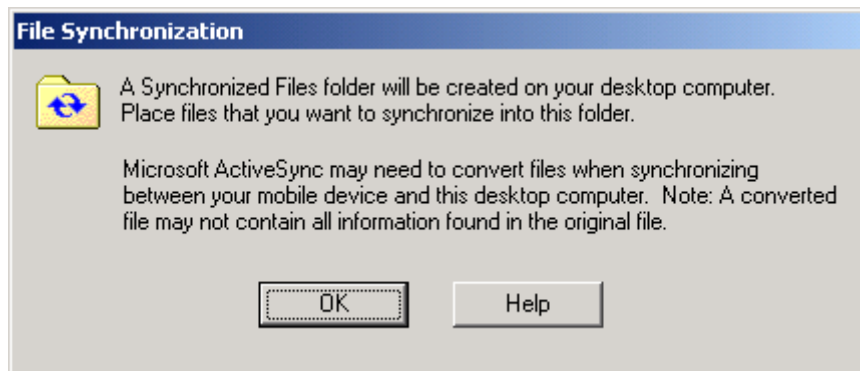


Figure 2 - File Synchronization

- 3.10. **NOTE:** Active Sync has three sync modes to choose from. From the PC select **Tools, Option, SyncMode**. Select a Sync mode, **Continuous, On Connection, or Manual**. Determine which mode you are using and understand it's implications for synchronization. If you have selected **Continuous** mode, you will not have to press the ActiveSync Sync button to synchronize, but you will have to watch the ActiveSync icon to determine when synchronization has been completed. When the green arrows have come to a **COMPLETE** stop (they sometimes stop for a few seconds and start up again) or when you click on ActiveSync and it says **SYNCHRONIZED**.

4. Installing Windows Mobile Device Center – Windows Vista.

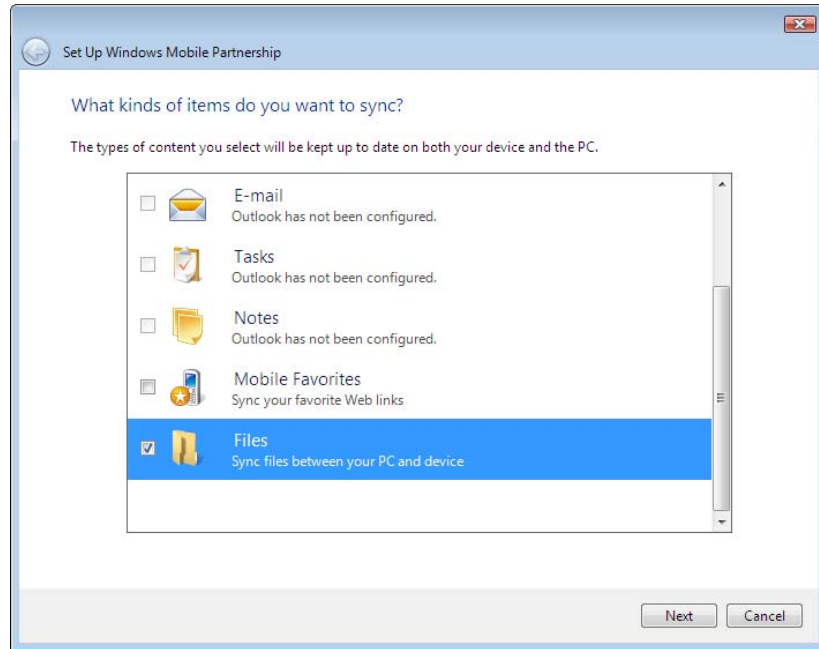
- 4.1. The Windows Mobile Device Center is Microsoft Vista application used to transfer data between your desktop and your PocketPC. You must install Mobile Device Center. This procedure need only be done once when first setting up your PPC.
- 4.2. Install Windows Mobile Device Center using the CD and instructions that came with your PocketPC. You can also download ActiveSync from www.microsoft.com.
- 4.3. Double click the Mobile Device Center shortcut on the desktop.



- 4.4. The Mobile Device Center will open up. Place your device in the cradle. Windows Mobile should recognize the device and proceed to automatically connect to your device. Once finished a green check mark with signify the connection is complete.



- 4.5. Click set up your device. At this point Windows Mobile will proceed to establish a PARTNERSHIP. Check the files box before clicking next. Follow the instructions to set up a partnership. **Important:** REMEMBER your partnership name. When you install SportsWare and when you sync the desktop and PocketPC you will need to reference this name.



- 4.6. This will create the folder that will contain the desktop files that ActiveSync will transfer back and forth between the desktop and PocketPC.

5. Licensing the PocketPC Program

- 5.1. Start SportsWare on the PC by clicking on the **SportsWare** icon.
- 5.2. From **File** menu, select **Add License, PDA**.
- 5.3. Select the **PDA names** you want to license.
- 5.4. Click the **Generate Code** button and contact CSMi with the code to obtain your Palm license.
- 5.5. Enter the License Key you receive from CSMi and lick the OK button. SportsWare will report, "**License successfully updated!**".

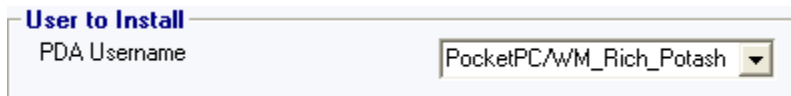
6. Deleting Existing SportsWare Files from the PocketPC

- 6.1. **Important:** *You must delete all SportsWare files from your PocketPC before installing a new SportsWare version.*
- 6.2. On the PocketPC select **Start, Settings**.
- 6.3. Select the **System** tab.
- 6.4. Select **Remove Programs**.
- 6.5. Select **CSMi SportsWare** and click the **Remove** button.
- 6.6. Select **Start, File Explorer**.

- 6.7. From the Pull Down list at the top-left-corner of the File Explorer, select **My Documents**.
- 6.8. Select and hold the **HandBase3** folder.
- 6.9. From the Pop-up menu, select **Delete**.
- 6.10. Select and hold the **CSMi SportsWare2009.CAB** file.
- 6.11. From the Pop-up menu, select **Delete**.

7. Installing SportsWare on the PocketPC

- 7.1. From the PC, start **SportsWare2009**.
- 7.2. From the **File** menu, select **Synchronize, PDA**.
- 7.3. Select the **Install** tab.
- 7.4. In the **User to Install** area, select the **PDA Username**.



User to Install
PDA Username: PocketPC/WM_Rich_Potash

- 7.5. In the **Screen Size** area, select the correct screen resolution of your PDA device. If you do not know the screen resolution of your PDA, refer to your PDA owner's manual. In general 320x240 is used for handheld PDAs and 240x240 is used for SmartPhones.
- 7.6. In the **Passwords** area, select **Yes** or **No** to install a Password Protected version of SportsWare. **Note:** *If you select **Yes**, SportsWare will require a password when starting on the PDA, however it is still possible for someone to HotSync your PDA and review the data. For increased security there are a number of third-party tools which protect PDA data.*

- 7.7. Click the **Install** button. SportsWare will copy the installation program (**CSMi SportsWare 2009.CAB**) to the PocketPC synchronized folder.

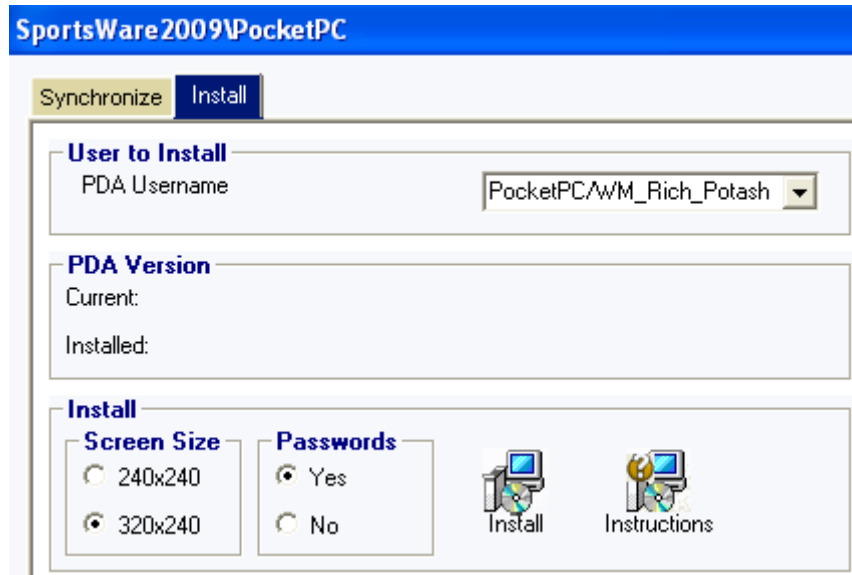



Figure 3 - Install Tab

- 7.8. From the Windows desktop, double-click the **ActiveSync** icon. ActiveSync should report all files are synchronized. For Vista users click the small green button  on The Windows Mobile Device Center screen.

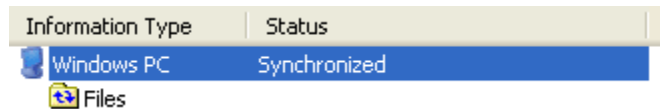
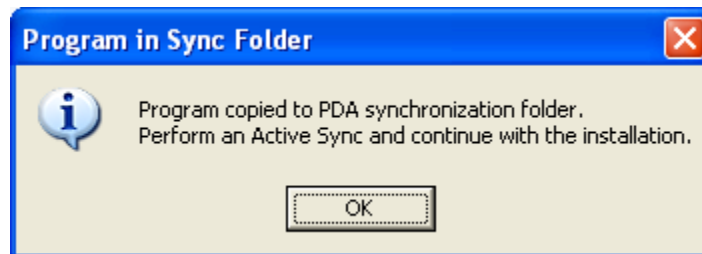



Figure 4 - Synchronization Status

- 7.9. From the PC click OK after Active Sync shows the files as **Synchronized**.



- 7.10. On the PocketPC select **Start, File Explorer**.
- 7.11. Open the **My Documents** folder.
- 7.12. Click the **CSMi SportsWare 2009** file. This will install the SportsWare application files. **Note:** If the PPC reports **"This program is from an Unknown Publisher"**, click **Yes** to continue.
- 7.13. The PPC will report CSMi SportsWare 2009.CAB was successfully installed on your device. Click the **OK** button to close the Install window.
- 7.14. Select **Start, Programs**. Click the **SportsWare2009** icon . The SportsWare PocketPC application will start and complete the installation.

- 7.15. If you checked **Yes** to use **Passwords**, SportsWare will ask for the Password. Enter a password and click the **OK** button.
- 7.16. The SportsWare PPC application will start and complete the installation. You will see a blank Athlete Listing screen.
- 7.17. From SportsWare, select **File, Exit** to close the program. **IMPORTANT:** *Failure to close the program on the PocketPC will result in SportsWare not syncing correctly.*

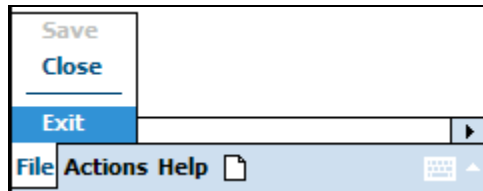
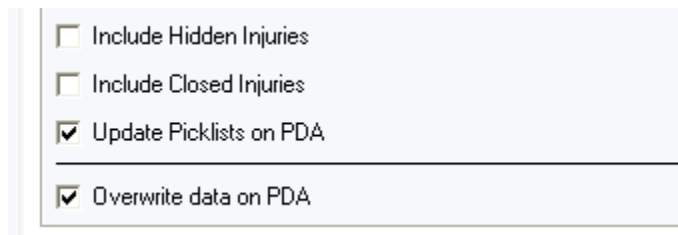


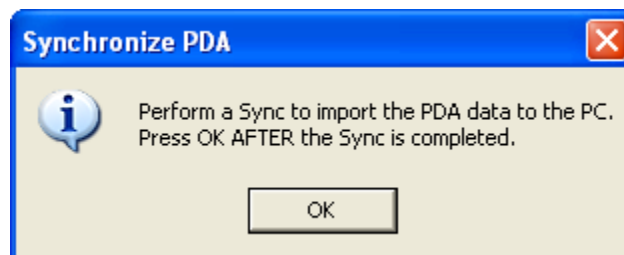
Figure 5 - File – Exit

8. Sending Your Data to the PocketPC for the First Time

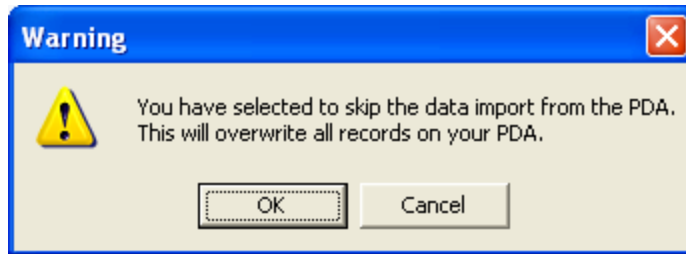
- 8.1. Start SportsWare on the PC.
- 8.2. From the **File** menu, select **Synchronize, PDA**.
- 8.3. In the **Data to Send** area, check the **Overwrite data on PDA** and the **Update Picklists on PDA** checkboxes. **Note:** *These boxes should only be selected the first time you send data to the new SportsWare application.*



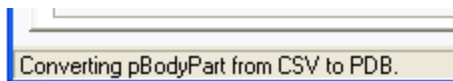
- 8.4. In the **Synchronize** area, select the **PDA Username**.
- 8.5. Click the **Synchronize** button.
- 8.6. Perform a Sync through ActiveSync. Depending on the SyncMode you selected when you installed ActiveSync the sync behavior will vary slightly, but in each case, clicking the **Sync** button on the ActiveSync panel (if it is disabled, a sync is in progress and you will have to wait) until you see a status of synchronized; insures a complete synchronization. PDA. **Important:** *Click the **OK** button after the HotSync is completed.*



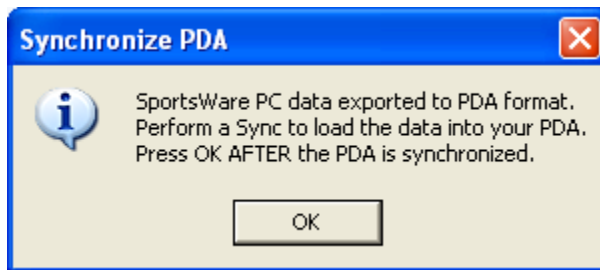
- 8.7. SportsWare displays a message that you will over-write your existing PDA data. Click the **OK** button to continue.



- 8.8. SportsWare will export your data to the PDA format. It will take a few minutes to export all of the picklists. The export progress is displayed in the Status bar at the bottom of the SportsWare2009/PocketPC screen.

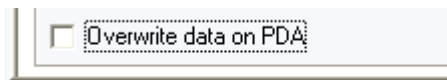


- 8.9. After the export is completed, SportsWare will ask you to perform a Sync. Perform a Sync through ActiveSync. **Important:** Click the **OK** button after the Sync is completed.

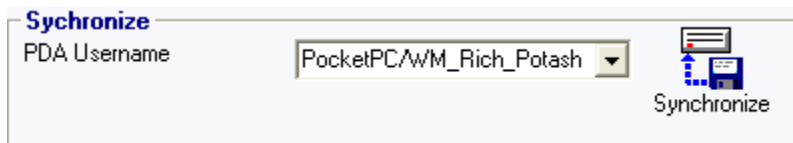


9. Synchronizing SportsWare Data with the PocketPC

- 9.1. After installing SportsWare on your PocketPC, you will periodically synchronize the data. During the synchronize procedure, SportsWare takes the new information from your PocketPC and adds it to the Desktop database. SportsWare then generates a new copy of the desktop data for the PocketPC and sends it to the PocketPC.
- 9.2. If SportsWare is running on the PocketPC, select, **File, Exit**. **Important:** *If you do not exit SportsWare on the PocketPC before synchronizing, the data may be lost!*
- 9.3. From the PC **File** menu, select **Synchronize, PDA**.
- 9.4. **Note:** *The **Overwrite data on PDA** checkbox should not be selected.*

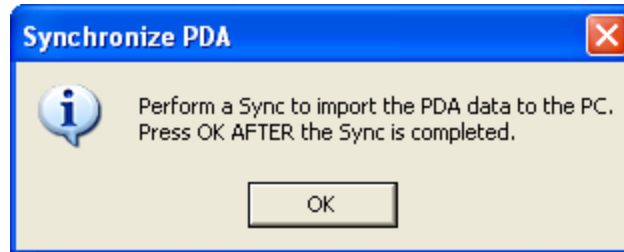


- 9.5. In the **Synchronize** area, select the **PDA Username**.

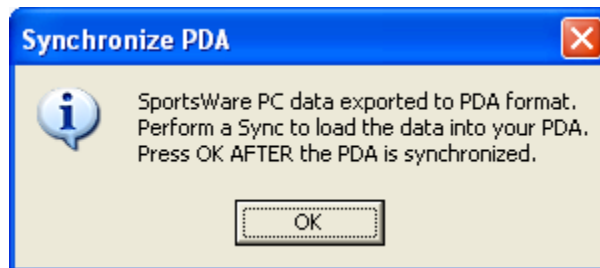


- 9.6. Click the **Synchronize** button.

- 9.7. SportsWare will ask you to perform a HotSync to import the data from the PDA to the PC. Depending on the SyncMode you selected when you installed ActiveSync the sync behavior will vary slightly, but in each case, clicking the **Sync** button on the ActiveSync panel (if it is disabled, a sync is in progress and you will have to wait) until you see a status of synchronized; insures a complete synchronization. *After the HotSync is completed, click the **OK** button.*



- 9.8. SportsWare then combines the data from the Palm with the Desktop data and generates a new database for the Palm. When the new Palm database is ready, SportsWare asks you to perform a second Sync. Perform an Sync on the PocketPC. *After ActiveSync shows **Synchronized**, click the **OK** button.*



- 9.9. The synchronization between the Desktop and PocketPC is now complete. If you have a second PDA, you can synchronize it now by selecting the second PDA Username and repeating the above steps, otherwise click the **Exit** button to close the PC SportsWare2009/PocketPC Synchronization window.