



SportsWare2010 Palm Installation Instructions

Note: Please read the following document before installing SportsWare2010 on your Palm device.

1. Overview

- 1.1. Welcome to the SportsWare2010 for Palm software. This document details the procedures to install and synchronize the SportsWare2010 for Palm version.
- 1.2. **Note:** This procedure assumes you have already installed SportsWare2010 on your Desktop Computer and have HotSync'd your Palm with the Palm desktop software.

2. Supported Devices

- 2.1. OS: PalmOS 3.5 and above Memory: 16MB recommended.

3. Licensing the Palm Program

- 3.1. Start SportsWare on the PC by clicking on the **SportsWare** icon.
- 3.2. From **File** menu, select **Add License, PDA**.
- 3.3. Select the **PDA names** you want to license.
- 3.4. Click the **Generate Code** button and contact CSMi with the code to obtain your Palm license.
- 3.5. Enter the License Key you receive from CSMi and lick the OK button. SportsWare will report, "**License successfully updated!**".

4. Deleting Existing SportsWare Files from the Palm

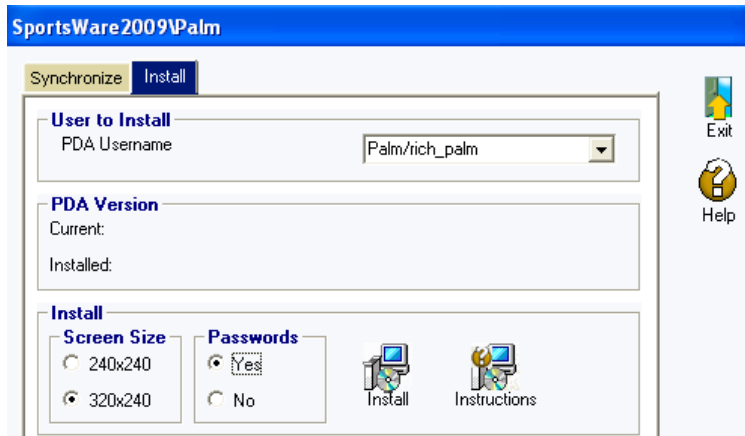
- 4.1. You must delete all SportsWare files from your Palm before installing a new SportsWare version. To delete a file:
 - 4.1.1. Click on the **Home** icon.
 - 4.1.2. From the **App** menu, click **Delete**.
 - 4.1.3. Select the desired file and click the **Delete** button.
- 4.2. Repeat step 4.1.3 to delete the following 14 files from the Palm. **Note:** Insure that these files have been deleted. Failure to do so could result in data corruption.

- Athlete
- Concussion
- Injury
- Phone
- Referral
- Treatment
- SportsWare
- System
- Athlete_HDF
- Concussion_HDF
- Injury_HDF
- Phone_HDF
- Referral_HDF
- Treatment_HDF

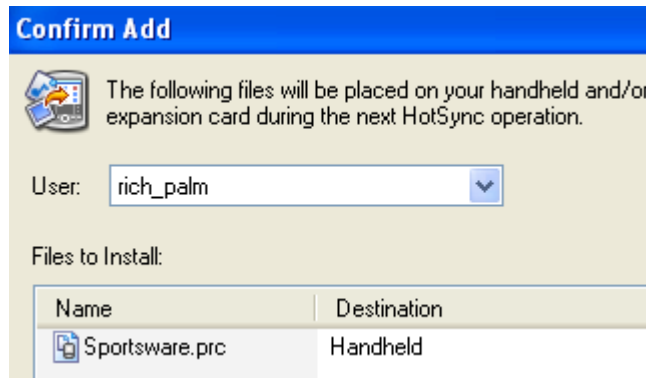
5. Installing the New SportsWare Program on the Palm

- 5.1. From the PC, start **SportsWare2010**.
- 5.2. From the **File** menu, select **Synchronize, PDA**.

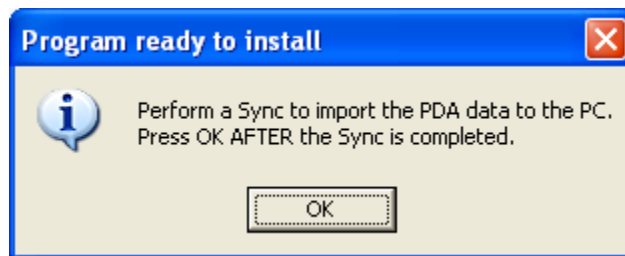
- 5.3. Select the **Install** tab.
- 5.4. In the **User to Install** area, select the **PDA Username**.
- 5.5. In the **Screen Size** area, select the correct screen resolution of your PDA device. If you do not know the screen resolution of your PDA, refer to your PDA owner's manual. In general 320x240 is used for handheld PDAs and 240x240 is used for SmartPhones.
- 5.6. In the **Passwords** area, select **Yes** or **No** to install a Password Protected version of SportsWare. **Note:** *If you select Yes, SportsWare will require a password when starting on the PDA, however it is still possible for someone to HotSync your PDA and review the data. For increased security there are a number of third-party tools which protect PDA data.*
- 5.7. Click the **Install** button.




- 5.8. SportsWare launches the Palm Installer. Select the correct **User** and click the **OK** button.



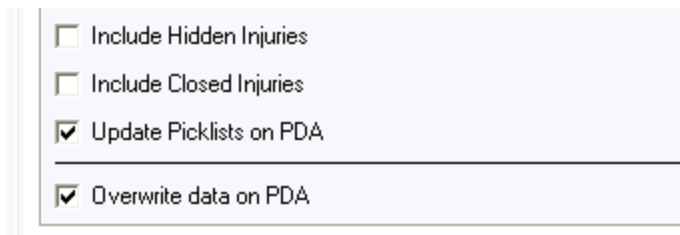
- 5.9. Perform a **HotSync** to copy the SportsWare program to the Palm. After the HotSync is completed, click the **OK** button.



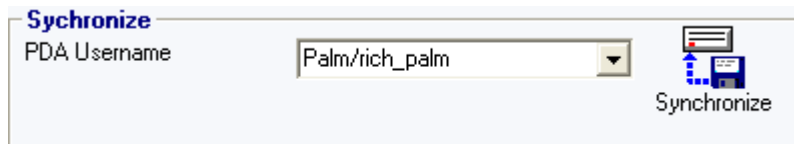
- 5.10. On the Palm, click the **Home** button. From the **Home** screen, click the **SportsWare2010** icon .
- 5.11. If you checked **Yes** to use **Passwords**, SportsWare will ask for the Password. Enter a password and click the **OK** button.
- 5.12. The SportsWare Palm application will start and complete the installation. You will see a blank Athlete Listing screen.
- 5.13. Click the Home button to exit SportsWare. **Note:** *The HotSync will not update SportsWare data if the SportsWare program is open on the PDA. You must always Click the **Home** button to Exit SportsWare before a HotSync.*

6. Sending Your Data to the Palm for the First Time

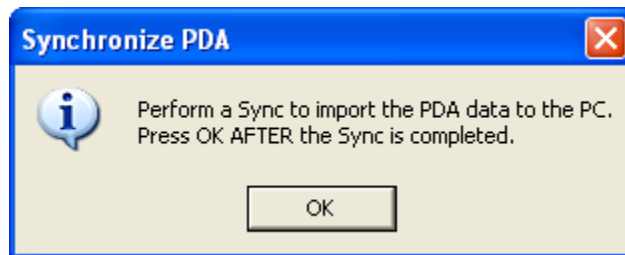
- 6.1. Start SportsWare on the PC.
- 6.2. From the **File** menu, select **Synchronize, PDA**.
- 6.3. In the **Data to Send** area, check the **Overwrite data on PDA** and the **Update Picklists on PDA** checkboxes. **Note:** *These boxes should only be selected the first time you send data to the new SportsWare application.*



- 6.4. In the **Synchronize** area, select the **PDA Username**.



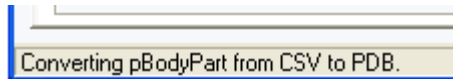
- 6.5. Click the **Synchronize** button.
- 6.6. SportsWare will ask you to perform a HotSync. Click the **HotSync** button on the PDA. **Important:** *Click the **OK** button after the HotSync is completed.*



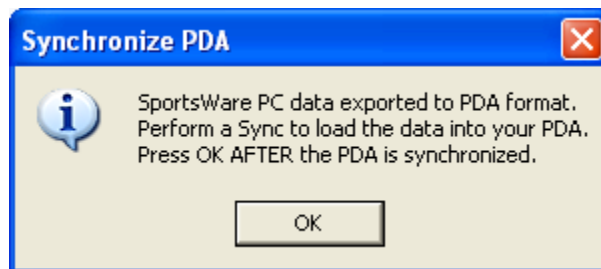
- 6.7. SportsWare displays a message that you will over-write your existing Palm data. Click the **OK** button to continue.



- 6.8. SportsWare will export your data to the PDA format. It will take a few minutes to export all of the picklists. The export progress is displayed in the Status bar at the bottom of the SportsWare2010/Palm screen.

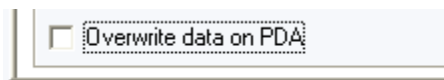


- 6.9. After the export is completed, SportsWare will ask you to perform a HotSync. Click the **HotSync** button on the PDA. After the HotSync is completed, click the **OK** button.

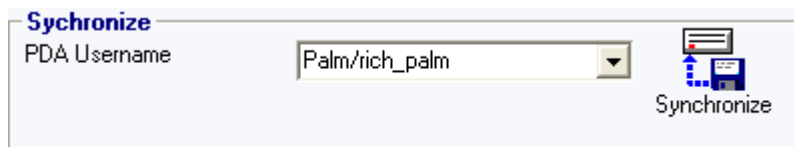


7. Synchronizing SportsWare Data with the Palm

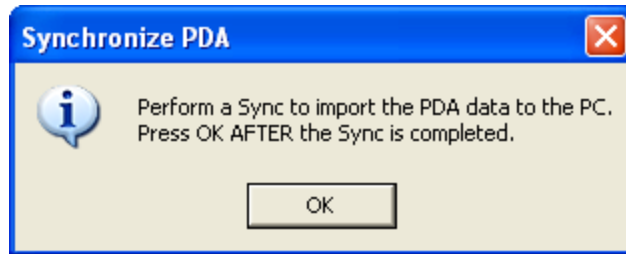
- 7.1. After installing SportsWare on your Palm, you will periodically synchronize the data between the PC and the PDA. During the synchronize procedure, SportsWare takes the new information from your Palm and adds it to the Desktop database. SportsWare then generates a new copy of the desktop data for the Palm and sends it to the Palm.
- 7.2. Start SportsWare on the PC.
- 7.3. From the **File** menu, select **Synchronize, PDA.'**
- 7.4. **Note:** The **Overwrite data on PDA** checkbox should not be selected.



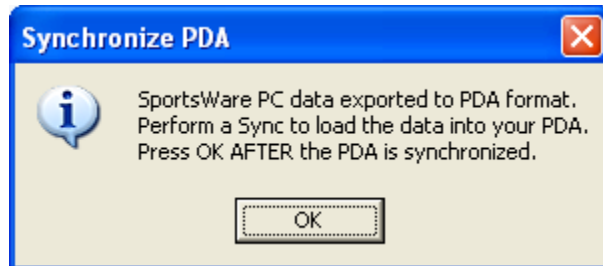
- 7.5. In the **Synchronize** area, select the **PDA Username**.



- 7.6. Click the **Synchronize** button.
- 7.7. SportsWare will ask you to perform a HotSync to import the data from the PDA to the PC. Click the **HotSync** button on the PDA. *After the HotSync is completed, click the **OK** button.*



- 7.8. SportsWare then combines the data from the Palm with the Desktop data and generates a new database for the Palm. When the new Palm database is ready, SportsWare asks you to perform a second HotSync. Click the **HotSync** button on the PDA. *After the HotSync is completed, click the **OK** button.*



- 7.9. The synchronization between the Desktop and Palm is now complete. If you have a second Palm, you can synchronize it now by selecting the second Palm Username and repeating the above steps, otherwise click the **Exit** button to close the PC SportsWare2010/Palm Synchronization window.