


|   |   |   |                        |
|---|---|---|------------------------|
|  | <b>Computer Sports Medicine, Inc. (www.csmisolutions.com)</b> |   |                        |
|   | <b>Title:</b>   | <b>HUMAC Software Installation Instructions for WinXP</b> |                        |
|   | <b>Rev:</b>   | A   | <b>Effective Date:</b> |

## 1. Program Requirements

- Windows98, 98 SE, Me, 2000, or XP.
- Available USB 1.1 or 2.0 port for the HUMAC NORM and 6000 interface.
- Available serial port (COM1 or COM2) for the HUMAC CYBEX II, 300, TEF, TR, and Lift Task interface.
- CD-ROM drive to install the software.

## 2. Installing the HUMAC Program

1. If you are installing the software on a NORM or 6000, leave the HUMAC USB cable unplugged from the computer
2. Turn the computer on.
3. Place the HUMAC CD-ROM in your computer and remove any floppy disks. The setup program should begin running. If it does not start:
  - a. From the Windows Desktop, select **Start, Settings, Control Panel**.
  - b. Double-click the **Add/Remove programs** icon.
  - c. Select the **Install** button.
  - d. Select **Next>** to search for the HUMAC installation program.
  - e. The Command line will show **d:\setup.exe** where d is your CD-ROM drive.
  - f. Press the **Finish** button to start the installation.
4. We suggest you accept the default installation parameters at each screen.
5. Complete the setup program.

If you are installing the software for a NORM or 6000, continue with the section **Installing The HUMAC USB Drivers**. If you are installing the software for a CYBEX II, 300, TEF, TR, or Lift Task, this completes the installation process.

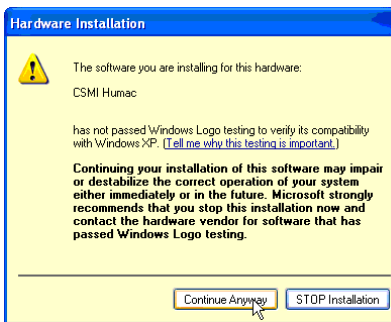
## 3. Installing the HUMAC USB Drivers

1. With the CYBEX and PC turned on, plug the HUMAC USB cable into the PC.

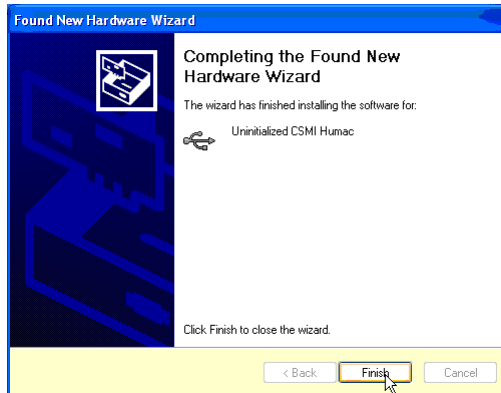
- Windows will start the **Found New Hardware Wizard** for the **USB Device** Select **Next >**.



- When the Logo Testing message appears, select **Continue Anyway**.



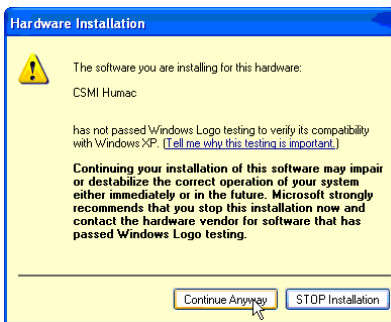
- Windows will complete loading the **USB Device** drivers. When the process completes, select **Finish**.



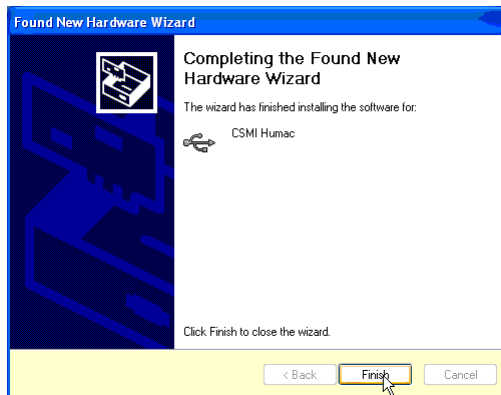
- Windows will start the **Found New Hardware Wizard** for the **CSMI Humac** Select **Next >**.



6. When the Logo Testing message appears, select **Continue Anyway**.



7. Windows will complete loading the **CSMI Humac** drivers. When the process completes, select **Finish**.



8. Windows will then display the Found New Hardware completion message. The message should report **Your new hardware is installed and ready to use**. Select the **X** to close the window.

