


|   |   |   |                        |
|---|---|---|------------------------|
|  | <b>Computer Sports Medicine, Inc. (www.csmisolutions.com)</b> |   |                        |
|   | <b>Title:</b>   | <b>Exercise Browser2004<br/>Installation Instructions</b> |                        |
|   | <b>Document #:</b>  | 300046  |                        |
|   | <b>Rev:</b>   | A   | <b>Effective Date:</b> |

## 1. Installing the Software

1. Place the PVI CD-ROM in your computer and remove any floppy disks.
2. From the Windows Desktop, select **Start, Settings, Control Panel**.
3. Double-click the **Add/Remove programs** icon.
4. Click the **Install** button.
5. Select **Next>** to search for the PhysioVideo installation program.
6. The Command line will show **d:\setup.exe** where d is your CD-ROM drive.
7. Click the **Finish** button to start the installation.
8. The PVI installation program will begin. We suggest you accept the default installation parameters at each screen.

## 2. Running the Program

1. Double-click the **PVI Shortcut** to start the program.
2. You will see the PhysioVideo activation screen. From here you can:
  - Print the **Activation Form** to enable all of the features when you purchase the software.
  - Press **OK** to start the program.

## 3. Improving the Display Quality

The PhysioVideo Exercise Browser is optimized for an 800x600 screen area and greater than 256 colors. To change your screen settings:

1. From the Windows Task Bar, select **Start, Settings, Control Panel**.
2. From the Control Panel, double-click the **Display** icon.
3. Select the **Settings** tab.
4. Set the **Desktop Area** to at least 800 by 600 pixels.
5. Set the **Color Palette** to **16-bit, 24-bit, 32-bit, High Color** or **True Color**. The best results are obtained with 24-bit, 32-bit or True Color.
6. Click the **OK** button to save the new settings.

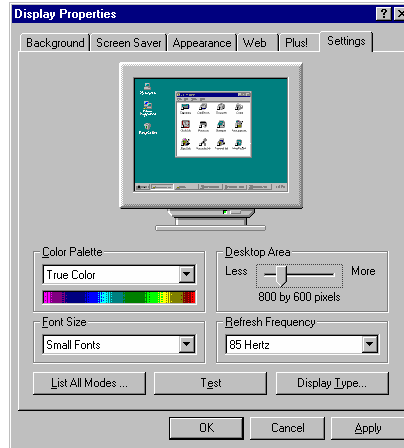


Figure 1 - Setting the Display Options

## 4. Improving the Printed Sheets Quality

### 4.1. Epson Printers

The following procedure describes how to set the paper and printer quality for the Epson 640 Color-Inkjet printer. The procedure for other Epson inkjet printers should be similar.

1. Select **Start, Setting, Printers**.
2. Right-click on your InkJet printer and select **Properties**.
3. Select the **Main** tab.
4. Set the **Media Type** to Photo Quality Ink Jet Paper.
5. Set the **Speed** to 720dpi.



Figure 2 - Epson Printer Settings

### 4.2. HP InkJet Printers

The following procedure describes how to set the paper and printer quality for the HP 600C Color-Inkjet printer. The procedure for other HP inkjet printers should be similar.

1. Select **Start, Setting, Printers**.
2. Right-click on your InkJet printer and select **Properties**.
3. Select the **Details** tab.
4. Set the **Paper Type** to Photo Quality Ink Jet Paper.
5. Set the **Print Quality** to Best.

#### 4.3. HP Laser Printers

The following procedure describes how to set the paper and printer quality for the HP LaserJet 5L printer. The procedure for other HP LaserJet printers should be similar.

1. Select **Start, Setting, Printers**.
2. Right-click on your LaserJet printer and select **Properties**.
3. Select the **Graphics** tab.
4. Set the **Resolution** to 600 dots per inch.
5. Set the **Dithering** to Fine.

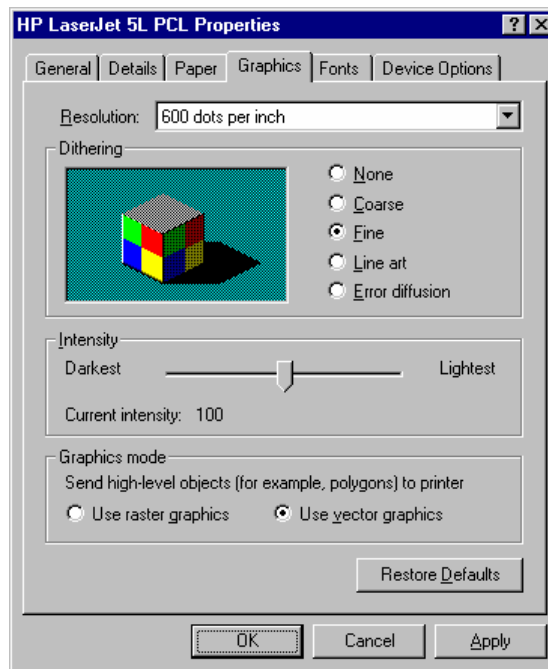


Figure 3 - HP LaserJet Settings