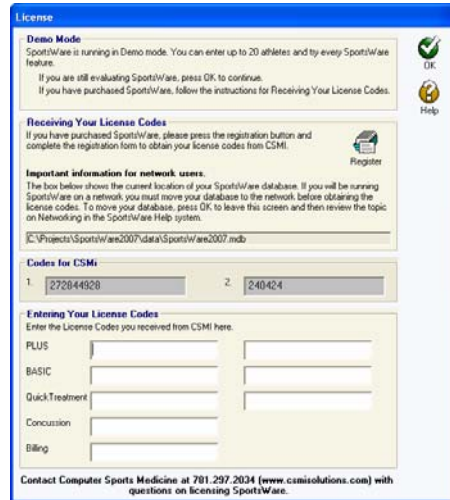


Licensing SportsWare2007

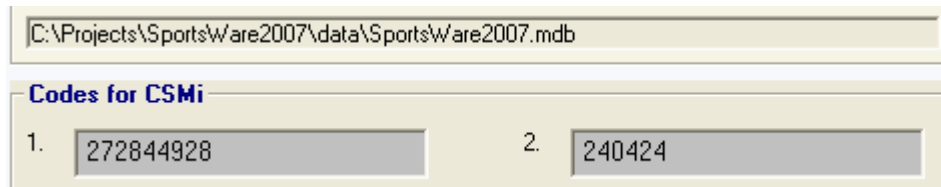
1. License Screen

- 1.1. When you launch SportsWare for the first time you will be prompted to the License screen.



2. Database Location

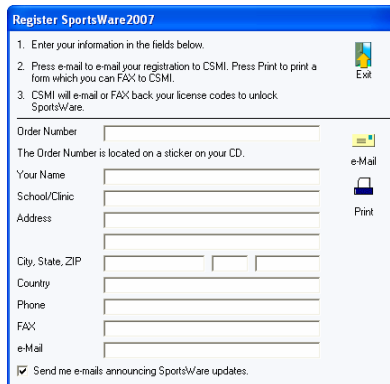
- 2.1. The license screen displays your database location and the **Codes for CSMi**. The Codes for CSMi are dependant on the location of your database.



- 2.2. Local Database: If you will be storing your database on the C: (local drive), the database location is typically C:\Program Files\SportsWare2007\Data\SportsWare2007.mdb.
- 2.3. Network Database: If you are storing your database on a network and SportsWare is not displaying the correct network location, you must move the database to the network before Licensing SportsWare.
- 2.3.1. Click the **OK** button to skip the registration and start SportsWare.
- 2.3.2. Use the **File, Move** command to move your database to the network location.
- 2.3.3. Exit and re-start SportsWare. The correct network location should be displayed.

3. Licensing SportsWare

- 3.1. When the license screen show the correct database location, click the **Register** button.



Register SportsWare2007

1. Enter your information in the fields below.
2. Press e-mail to e-mail your registration to CSMi. Press Print to print a form which you can FAX to CSMi.
3. CSMi will e-mail or FAX back your license codes to unlock SportsWare.

Order Number

The Order Number is located on a sticker on your CD.

Your Name

School/Clinic

Address

City, State, ZIP

Country

Phone

FAX

e-Mail

Send me e-mails announcing SportsWare updates.

Exit

e-Mail

Print

- 3.2. Complete the **Register** information.
 - 3.2.1. If you received a CD from CSMi, the Order Number will be on the CD. If you downloaded the SportsWare from our website, leave the Order Number blank.
- 3.3. Click the **e-Mail** or **FAX** information to send the License information to CSMi.
- 3.4. Click the **Exit** button to close the **Register** screen.
- 3.5. Click the **OK** button to start SportsWare.
- 3.6. CSMi will return your **License Codes** by the next business day.
- 3.7. Start SportsWare and enter the **License Codes** you receive from CSMi.