



101 Tosca Drive
Stoughton, MA 02072 USA

(Phone) 781.297-2034
(FAX) 781.297-2039
(Web) www.csmisolutions.com

Synchronizing SportsWare2008 on a Laptop Through a Network Connection

1. Introduction

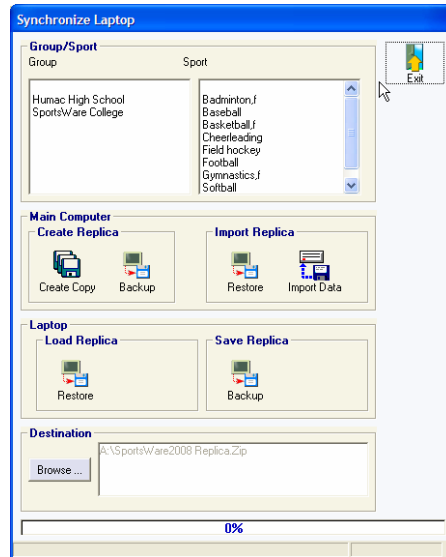
- 1.1. The SportsWare Synchronize Laptop feature allows you to work with a special copy of your main database (**SportsWare2008 Replica.MDB**) on a laptop computer while other people continue to work with the main database. You can then combine the laptop changes with the main database (network) changes.
- 1.2. For this example, the Athletic Training Room has SportsWare2008 on a laptop PC with the database located on the network (called the Main Computer). One of the athletic trainers will be traveling with a team and wants to work with the SportsWare database on the laptop.

2. Basic Steps

- 2.1. Create a Replica on the Main Computer
- 2.2. Load the Replica on the Laptop
- 2.3. Work with the SportsWare data on the Laptop.
- 2.4. Save the Replica on the Laptop
- 2.5. Import the Replica to the Main Computer.
- 2.6. Create a new Replica on the Main Computer.

3. Creating a Replica on the Main Computer

- 3.1. Start SportsWare on the main computer.
- 3.2. From the **File** menu, select **Synchronize, Laptop**.
- 3.3. SportsWare will display the **Synchronize Laptop** form.



3.4. During the **Laptop Synchronization**, SportsWare creates a backup copy of the database which must be transferred to the laptop. At the bottom of the form is the **Backup Destination** SportsWare will use to create the backup. ***The first time you run the Synchronize Laptop procedure you must set the Backup Destination.***

3.4.1. If the laptop can access the network containing your SportsWare database, the **Backup Destination** should be **“Your Network Location”\SportsWare2008 Replica.Zip**. (Example: S:\SportsWare\SportsWare2008Replica.Zip)

3.4.1.1. Click the **Destination** Button.

3.4.1.2. If SportsWare displays the **Insert disk** dialog box, click **Cancel**.

3.4.1.3. From the **Open, Look-in** control, select your network drive.

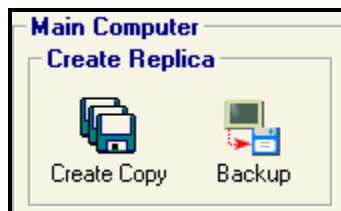
3.4.1.4. Select the folder containing your SportsWare database.

3.4.1.5. The **File name** should say **SportsWare2008 Replica.Zip**.

3.4.1.6. Click **Open**.

3.5. In the **Main Computer, Create Replica** area, click the **Create Copy** button. Wait for SportsWare to report **Success**.

3.6. In the **Main Computer, Create Replica** area, click the **Backup** button. Wait for SportsWare to report **Success**.

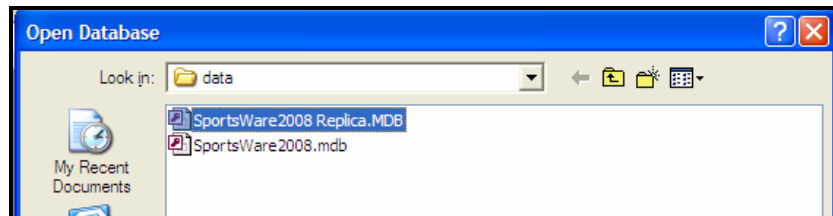


3.7. SportsWare has now created a Replica database for the Laptop.

4. Directing SportsWare to Look at the Replica Database

Note: The first time you run the **Synchronize Laptop** procedure you must open the Replica on the Laptop.

- 4.1. Start SportsWare on the Laptop.
- 4.2. From the **File** menu, select **Open**.
- 4.3. In the **Look-in** area, select the **C:** drive.
- 4.4. Select the **Program Files** folder.
- 4.5. Select the **SportsWare2008** folder.
- 4.6. Select the **data** folder.
- 4.7. Select the **SportsWare2008 Replica.MDB** file and click the **Open** button.

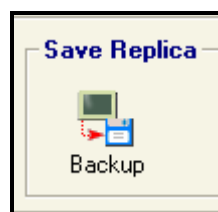


- 4.8. You will now be prompted to the License Screen. Contact CSMi to activate the Replica Database.
- 4.9. You can now work with the Replica data on your laptop.

5. Saving the Replica on the Laptop

Note: After you are done working with SportsWare on the laptop you must synchronize the data back to the Main computer (network database).

- 5.1. Start SportsWare on the Laptop.
- 5.2. From the **File** menu, select **Synchronize, Laptop**.
- 5.3. In the **Laptop, Save Replica** area, click the **Backup** button. Wait for SportsWare to report **Success**.

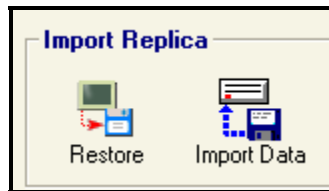


- 5.4. SportsWare has now backed-up the Replica database.
- 5.5. Click the **Exit** button.

6. Loading the Replica on the Main Computer

- 6.1. Start SportsWare on the laptop.

- 6.2. From the **File** menu, select **Open**.
- 6.3. In the **Look-in** area, select the **network** drive.
- 6.4. Select the **SportsWare2008.MDB** file and click the **Open** button.
- 6.5. From the **File** menu, select **Synchronize, Laptop**.
- 6.6. In the **Main Computer, Import Replica** area, click the **Restore** button. Wait for SportsWare to report **Success**.
- 6.7. In the **Main Computer, Import Replica** area, click the **Import Data** button. Wait for SportsWare to report **Success**.



- 6.8. SportsWare has now combined the data from the Laptop with the data on the network.

IMPORTANT: To continue working with the Laptop you must Create a new Replica (Section 2) and Load the new Replica (Section 3) onto the Laptop. If you do not do this, you will see duplicated records the next time you Import the Replica.

Note: SportsWare remembers the Backup Destination and Replica Database Location you set in the above procedure. You will not need to set them again unless you want to change the locations.