



Synchronizing SportsWare2008 with Your Home Computer

The SportsWare Synchronize Laptop feature allows you to work with a special copy of your main database (**SportsWare2008.MDB**) on a home computer (**SportsWare2008 Replica.MDB**). You can then combine the changes with the main database (work computer).

For this example, the Athletic Training Room has SportsWare2008 on a desktop PC (called the Main Computer). The Athletic Trainer wants to be able to work with SportsWare on their home computer.

1. Basic Steps

1. Create a Replica on the Main Computer (work computer)
2. Load the Replica on the home computer.
3. Work with the SportsWare data on the home computer.
4. Save the Replica on the home computer.
5. Import the Replica to the Main Computer.
6. Create a new Replica on the Main Computer.

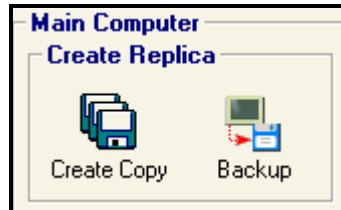
2. Creating a Replica on the Main Computer

1. Start SportsWare on the main computer.
2. From the **File** menu, select **Synchronize, Laptop**.
3. SportsWare will display the **Synchronize Laptop** form.

4. During the **Laptop Synchronization**, SportsWare creates a backup copy of the database which must be transferred to the home computer. At the bottom of the form is the **Backup Destination** SportsWare will use to create the backup. **The first time you run the Synchronize Home computer procedure you must set the Backup Destination.**

- If you will be using a USB Key or Memory Card to load the data, the **Backup Destination** should be the Media Device Drive, such as **E:\SportsWare2008 Replica.Zip**. To change the Backup Destination to the correct drive:

1. Click the **Destination** Button.
 2. If SportsWare displays the **Insert disk** dialog box, click Cancel.
 3. From the **Open, Look-in** control, select **your Media Card (E:, F:, etc...)**
 4. The **File name** should say **SportsWare2008 Replica.Zip**.
 5. Click **Open**.
5. In the **Main Computer, Create Replica** area, click the **Create Copy** button. Wait for SportsWare to report **Success**.
 6. In the **Main Computer, Create Replica** area, click the **Backup** button. Wait for SportsWare to report **Success**.



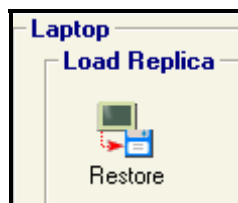
7. SportsWare has now created a Replica database for the Home computer.

3. Loading the Replica on the Home Computer

1. Start SportsWare on the Home computer. *Note: You must install SportsWare on the home computer.*
2. From the **File** menu, select **Synchronize, Laptop**.
3. During the **Laptop Synchronization**, SportsWare creates a backup copy of the database which must be transferred to the home computer. At the bottom of the form is the **Backup Destination** SportsWare will use to load the backup. **The first time you run the Synchronize Laptop procedure you must set the Backup Destination.**

- If you will be using a USB Key or Memory Card to load the data, the **Backup Destination** should be the Media Device Drive, such as **E:\SportsWare2008 Replica.Zip**. To change the Backup Destination to the correct drive:

1. Click the **Destination** Button.
 2. If SportsWare displays the **Insert disk** dialog box, place a diskette in the computer.
 3. From the **Open, Look-in** control, select **your Media Card (E:, F:, etc...)**
 4. The **File name** should say **SportsWare2008 Replica.Zip**.
 5. Click **Open**.
4. In the **Laptop, Load Replica** area, click the **Restore** button. Wait for SportsWare to report **Success**.



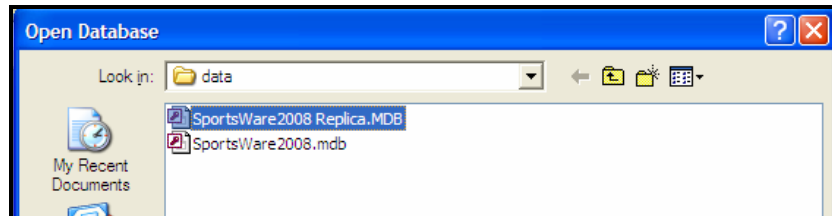
5. SportsWare has now loaded the Replica database onto the Home computer.

6. Click the **Exit** button.

4. Directing SportsWare to Look at the Replica Database

The first time you run the **Synchronize Laptop** procedure you must open the Replica on the Home computer.

1. From the **File** menu, select **Open**.
2. In the **Look-in** area, select the **C:** drive.
3. Select the **Program Files** folder.
4. Select the **SportsWare2008** folder.
5. Select the **data** folder.
6. Select the **SportsWare2008 Replica.MDB** file and click the **Open** button.

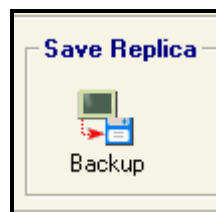


7. You will now be prompted to the License Screen. Contact CSMi to activate the Replica Database.
8. You can now work with the Replica database on your home computer.

5. Saving the Replica on the Home computer

After you are done working with SportsWare on the home computer you must move the data back to the Main computer.

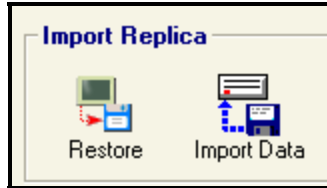
1. Start SportsWare on the Home computer.
2. From the **File** menu, select **Synchronize, Laptop**.
3. In the **Laptop, Save Replica** area, click the **Backup** button. Wait for SportsWare to report **Success**.



4. SportsWare has now backed-up the Replica database.
5. Click the **Exit** button.

6. Loading the Replica on the Main Computer

1. Start SportsWare on the Main computer.
2. From the **File** menu, select **Synchronize, Laptop**.
3. In the **Main Computer, Import Replica** area, click the **Restore** button. Wait for SportsWare to report **Success**.
4. In the **Main Computer, Import Replica** area, click the **Import Data** button. Wait for SportsWare to report **Success**.



5. SportsWare has now combined the data from the Home computer with the data on the Main computer.

IMPORTANT: To continue working with the Home computer you must Create a new Replica (Section 2) and Load the new Replica (Section 3) onto the Home computer. If you do not do this, you will see duplicated records the next time you Import the Replica.

Note: SportsWare remembers the Backup Destination and Replica Database Location you set in the above procedure. You will not need to set them again unless you want to change the locations.