

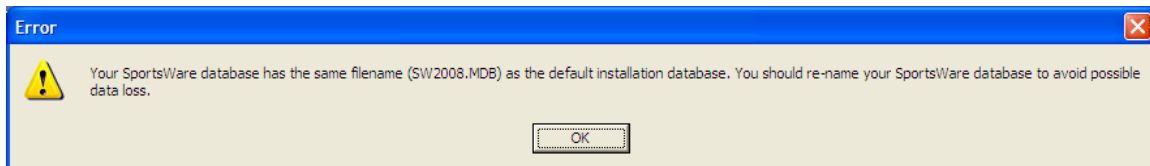


1. PRB

- 1.1. SportsWare reports “**Error: Your SportsWare database has the same filename as the default installation database**”.

2. SYMPTOMS

- 2.1. When attempting to use SportsWare you receive: Error: Your SportsWare database has the same filename (SW?????.MDB) as the default installation database. You should rename your SportsWare database to avoid possible data loss.



3. CAUSE

- 3.1. This error occurs when you point SportsWare to look at the default database. The file location of the actual database you should be working with (if located on the local machine) is C:\Program Files\SportsWare2008\Data\SportsWare2008.MDB.

4. RESOLUTION

- 4.1. Click OK at the error message. From SportsWare2008 go to the **File** menu – **Open**. Select the **C: Drive\Program Files\SportsWare2008** folder. Open the Data folder, double-click on the file **SportsWare2008.MDB**. This should be your working database.

5. STATUS

- 5.1. The above steps resolve the problem.