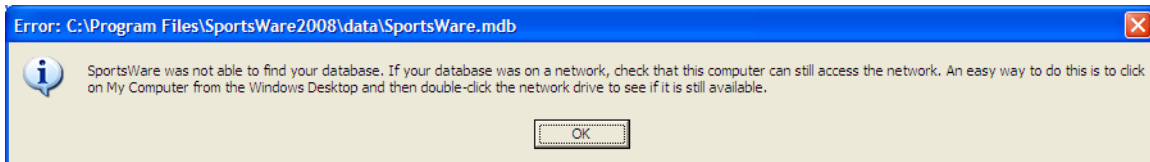


1. PRB: Can't Find Your Database In SportsWare2008

2. SYMPTOMS

- 2.1. You start SportsWare2008 and it reports it was not able to find your database.



3. CAUSE

- 3.1. When you exit SportsWare it saves the name of the last database opened. If the database is not accessible, SportsWare reports this error.

4. RESOLUTION

- 4.1. If you just installed SportsWare2008 or your database is stored on your local hard drive, try the default location.
 - 4.1.1. Click **OK** to Start SportsWare.
 - 4.1.2. SportsWare displays the **Open Database** dialog box.
 - 4.1.3. From the **Look-in** box select the **C:** drive.
 - 4.1.4. Double-click the **Program Files** folder.
 - 4.1.5. Double-click the **SportsWare2008** folder.
 - 4.1.6. Double-click the **Data** folder.
 - 4.1.7. Double-click the **SportsWare2008** file.
- 4.2. If you have been running SportsWare on a network, your computer may have lost its' connection to the network. If you know the location of your database:
 - 4.2.1. Click **OK** to Start SportsWare.
 - 4.2.2. SportsWare displays the **Open Database** dialog box.
 - 4.2.3. From the **Look-in** box select your network drive.
 - 4.2.4. Navigate to the folder containing your SportsWare database and double-click the **SportsWare2008** file.
- 4.3. If you are still unable to open your database or do not remember where it is stored.
 - 4.3.1. Click **OK** to Start SportsWare.
 - 4.3.2. SportsWare displays the **Open Database** dialog box.
 - 4.3.3. From the **Look-in** box select the **C:** drive.
 - 4.3.4. Double-click the **Program Files** folder.
 - 4.3.5. Double-click the **SportsWare2008** folder.
 - 4.3.6. Double-click the **Data** folder.
 - 4.3.7. Double-click the **SportsWare2008** file to open the default database.

- 4.3.8. Click the File menu. SportsWare will display a list of the recent databases at the end of File menu. Select the file you want to open.
- 4.4. If you are still unable to open your database or do not remember where it is stored.
 - 4.4.1. Click **OK** to Start SportsWare.
 - 4.4.2. SportsWare displays the **Open Database** dialog box.
 - 4.4.3. Click Cancel to exit the **Open Database** dialog box. SportsWare will report the database was not found Exit.
 - 4.4.4. From the **Windows Taskbar**, select **Start, All Programs, SportsWare2008, Utilities, Database List**.
 - 4.4.5. The Database List tool will display a list of previous SportsWare databases. From this list you should see the database you were using.
 - 4.4.6. Start SportsWare and open database you were using.

5. **STATUS**

- 5.1. The above procedure corrects the problem.