

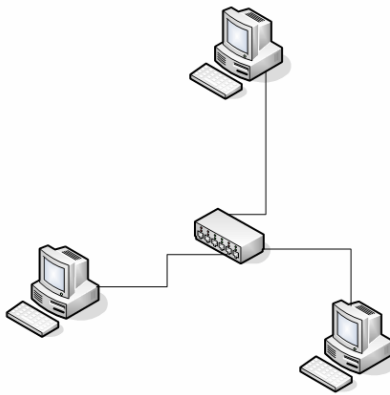


101 Tosca Drive  
Stoughton, MA 02072 USA

(Phone) 781.297-2034  
(FAX) 781.297-2039  
(Web) [www.csmisolutions.com](http://www.csmisolutions.com)

## SportsWare (SW) Network Pricing

The majority of SW Owners are installing SW on a network. In a network environment SW (the application) is loaded on the local computer and the database (records) is stored on a Network Server in a shared location (the main storage computer that the local computers have access to). In a network environment data entered on computer 1 will appear on computers 2 and 3 because they are all looking at the same database.



SW Network Pricing is based on the number of computers that have simultaneous access to SportsWare.

If you only need access to SW from one computer at a time and purchase 1 copy of SW Basic or Plus. You can:

- Load SW on all three local computers (or all many as you need) and point them to a shared database.
- At any time 1 computer can run SW. If a second user tries to log on they will be informed that all available licenses are in use.
- When the 1<sup>st</sup> user logs off – the second user will be able to log on to SW.

If you need access to SW from multiple computers at the same time you need to purchase a copy of SW for the number of computers that will be simultaneously running SportsWare. If you purchase 3 copies of SW you can:

- Load SW on all 3 computers (or as many as you need) and point them to a shared database.
- At any time 3 computers can run SW.
- If you own 3 copies of SW, have SW installed on more than three computers, all 3 SW programs are running, and a 4<sup>th</sup> person tries to start SW, they will be informed all available licenses are in use. When one of the original 3 users logs off – the next person will be able to log-on.

**NOTE:** You can run SW-Basic and SW-Plus on the same network. If a limited number of users need all of the features in SW Plus you can purchase the exact number of SW-Plus copies for them and additional copies of SW-Basic for the other users.