



Dear SportsWareOnLine Customer,

Your SportsWareOnLine.Net Account is now ready to use. To access do the following:

1. Go to www.swol123.net.
2. Insert your Email address.
3. Click the **Reset Password** button.

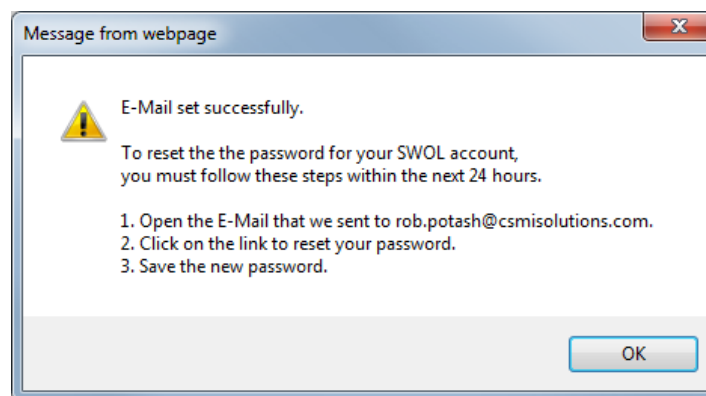
Desktop

E-Mail Address
rob.potash@csmisolutions.com

Password:

Login Reset Password

4. The Following Message will appear. Check your Email address within 24hours.



5. Open the Email from CSMi.
6. Click on the link to reset your password.

To reset the password for this account, click the following link (or copy and paste it into a browser Address bar):

<https://www.SWOL123.Net/cfmResetPasswordDesktop.aspx?Ticket=740720ad-b8a2-4d45-ba27-6a275afb9ade>

Please do not respond to this email.

7. Enter your email address

8. Enter a Password that meets the requirements displayed below the Password fields. **Note:** You can change them once you enter SportsWareOnLine for the first time under Institution.

The screenshot shows a web form titled "Online Access" with a blue header. It contains three input fields: "Online Access e-Mail" with the value "rob.potash@csmisolutions.com", "New Password" with six dots, and "Confirm Password" with six dots. Below these fields is a red-bordered box containing the text "Password Requirements: Must be at least 2 characters long." To the right of the form is a "Save" button.

9. Click the **Save** button in the Upper Right Corner of the Screen.
10. Insert your Email address and Password.

You are now in SportsWareOnLine. Please read the SportsWareOnLine Getting Started Manual BEFORE you begin entering data.

If you have any questions, please contact service@csmisolutions.com!

Enjoy!