

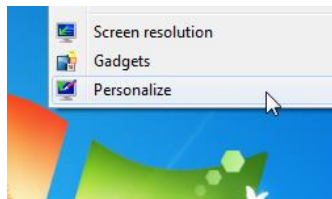
Setting the HUMAC Windows Power Settings

1. Introduction

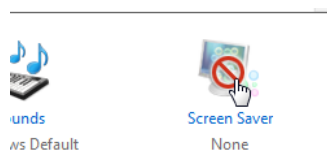
- 1.1. This document describes the procedure to set the Windows Power Settings for use with the HUMAC system.
- 1.2. **Important:** *Windows maintains separate power settings for each user. If you have multiple user login accounts, you must login as each user and set the power settings for that user.*

2. Windows8, Windows7.

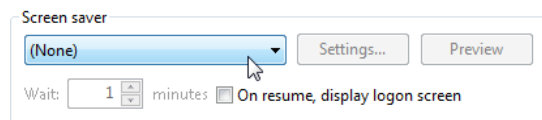
- 2.1. Right-click the **Windows Desktop** and left-click the **Personalize** link from the pop-up menu.



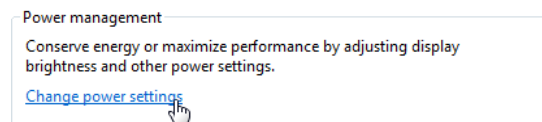
- 2.2. Click the **Screen Saver** link.



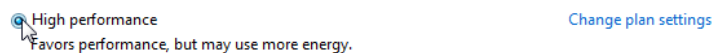
- 2.3. In the **Screen Saver** area, select **(None)**.



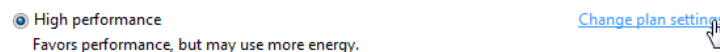
- 2.4. In the Power Management area, click the **Change power settings** link.



- 2.5. Select **High performance** as the preferred plan.



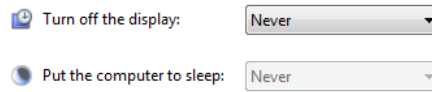
- 2.6. Click the **Change plan settings** link.



- 2.7. Desktop Systems.

- 2.7.1. Set **Turn off the display to Never**.

2.7.2. Set **Put the computer to sleep** to **Never**.

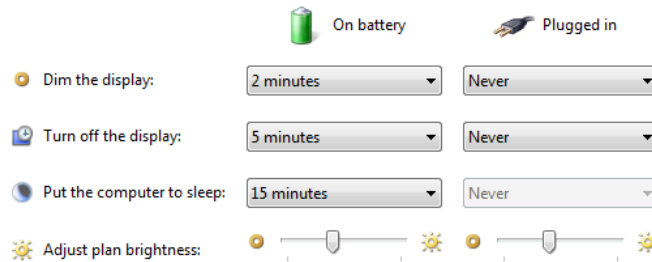


2.8. Laptop Systems. **Note:** *The laptop should always be plugged-in when using the HUMAC System to assure it does not shut-down while in-use. The following settings are used for **Plugged-in**.*

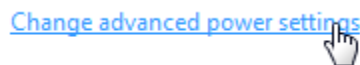
2.8.1. Set **Dim the Display** to **Never**.

2.8.2. Set **Turn off the display** to **Never**.

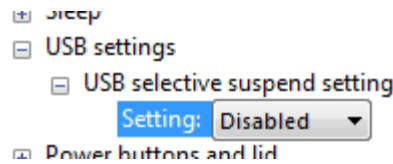
2.8.3. Set **Put the computer to sleep** to **Never**.



2.9. Click the **Change plan settings** link.



2.10. Click the **USB Settings**, **USB selective suspend setting** and change the **Setting** to **Disabled**.



2.11. Click the **OK** button to save your changes.

2.12. Click the **Save Changes** button.

2.13. Close the **Power Options**.

2.14. Close the **Control Panel**.

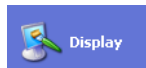
3. **Windows XP.**

3.1. From the Windows **Start** menu, select **Control Panel**.

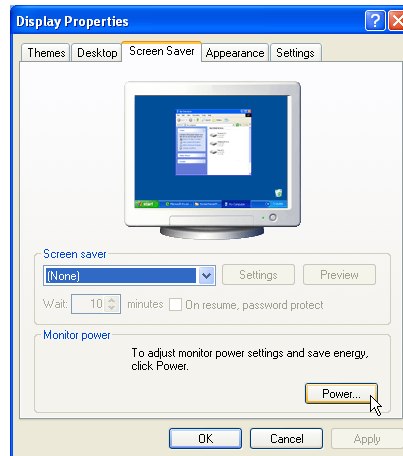
3.2. Click the **Appearance and Themes** icon.



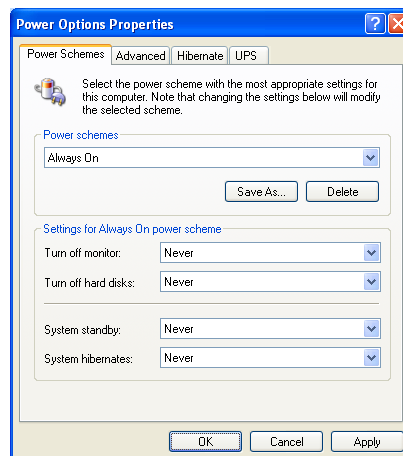
- 3.3. Click the **Display** icon.



- 3.4. From the Display Properties, select the **Screen Saver** tab.
- 3.5. In the **Screen Saver** area, select **(None)**.
- 3.6. In the **Monitor Power** area, click the **Power** button.



- 3.7. From the **Power Options Properties** dialog box, click the **Power Schemes** tab.
- 3.8. In the **Power Schemes** area, select **Always On**.
- 3.9. In the **Settings for Always on power scheme**, set all options to **Never**.



- 3.10. From the **Power Options Properties**, click the **OK** button to save your changes.
- 3.11. From the **Display Properties**, click the **OK** button to save your changes.
- 3.12. Close the **Control Panel** dialog form.